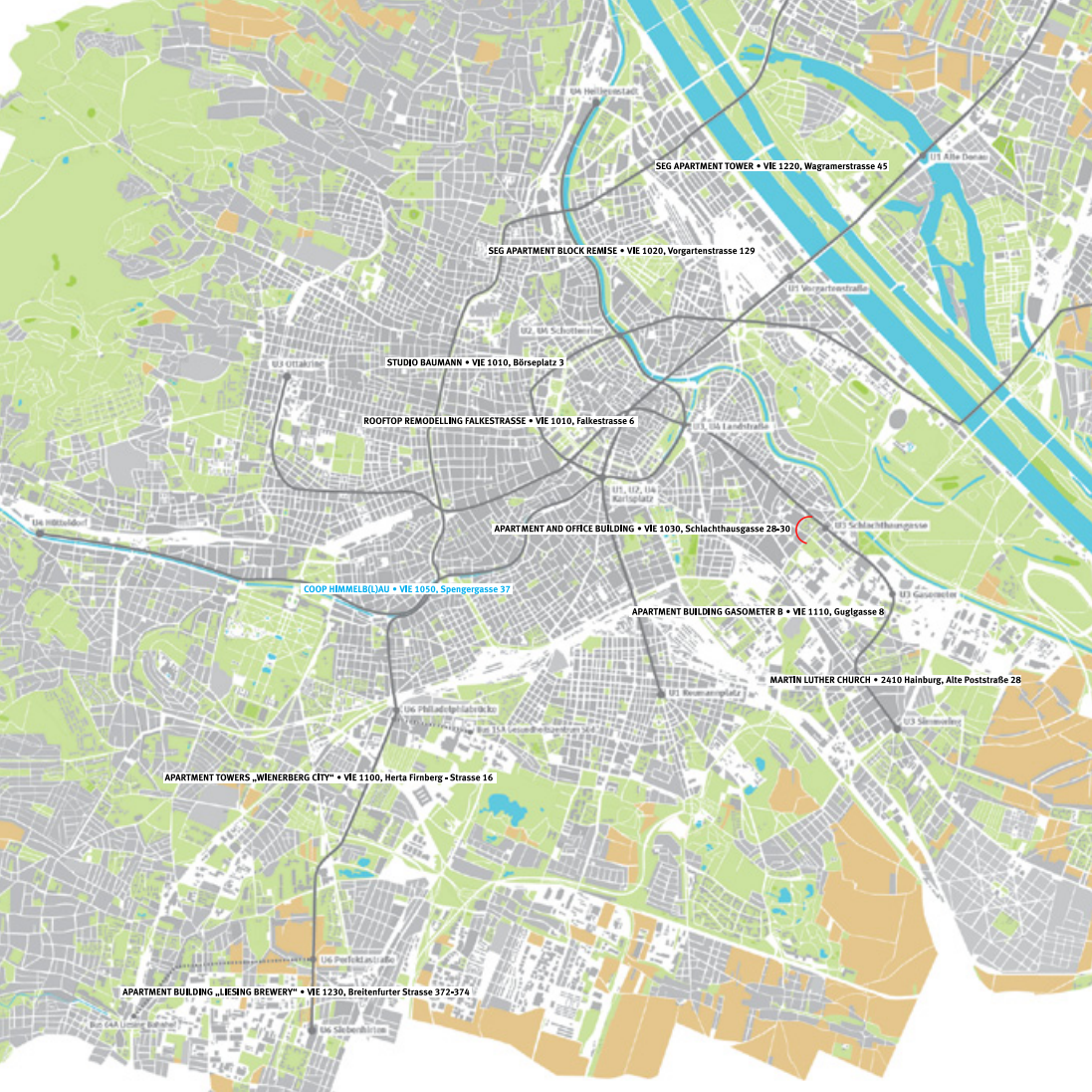




CMR²



SEG APARTMENT TOWER • VIE 1220, Wagramerstrasse 45

SEG APARTMENT BLOCK REMISE • VIE 1020, Vorgartenstrasse 129

STUDIO BAUMANN • VIE 1010, Börseplatz 3

ROOFTOP REMODELLING FALKESTRASSE • VIE 1010, Falkestrasse 6

APARTMENT AND OFFICE BUILDING • VIE 1030, Schleichthausgasse 28-30

COOP HIMMELB(L)AU • VIE 1050, Spengergasse 37

APARTMENT BUILDING GASOMETER B • VIE 1110, Guglgasse 8

MARTIN LUTHER CHURCH • 2410 Hainburg, Alte Poststraße 28

APARTMENT TOWERS „WIENERBERG CITY“ • VIE 1100, Herta Firnberg - Strasse 16

APARTMENT BUILDING „LIESING BREWERY“ • VIE 1230, Breitenfurter Strasse 372-374



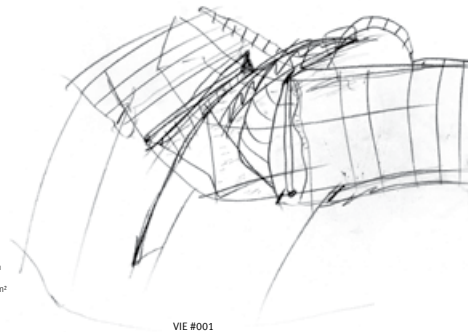
COOPHIMMELB(L)AU

ROOFTOP REMODELLING FALKESTRASSE | 1983/1987-1988

Falkestraße 6, VIE 1010

Program:
Office conversion

Floor area: 400 m²



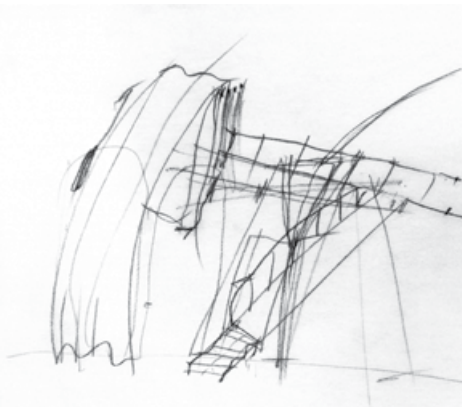
VIE #001



COOPHIMMELB(L)AU

STUDIO BAUMANN | 1984–1985

Börseplatz 3, VIE 1010



Program:
Artist studio

Floor area: 50 m²

VIE #002



COOPHIMMELB(L)AU

SEG APARTMENT BLOCK REMISE | 1994–2000

Vorgartenstrasse 129, VIE 1020



Program:

144 living units, 11 offices, 6 shops/cafe on 15 storeys

Floor area: 13 700 m²

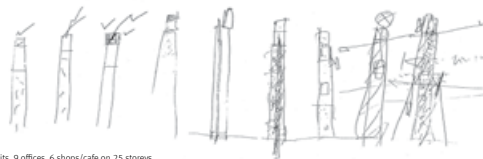
VIE #003



COOPHIMMELB(L)AU

SEG APARTMENT TOWER | 1994–1998

Wagramerstrasse 45, VIE 1220



Program:
70 living units, 9 offices, 6 shops/cafe on 25 storeys

Floor area: 13 700 m²

VIE #004



COOPHIMMELB(L)AU

APARTMENT BUILDING GASOMETER B | 1994–1999
Guglgasse 8, VIE 1110

Program:
254 living units and 76 student apartments on 22 storeys
Event hall for 3000 persons
2000 m² Shopping mall

Floor area: 35 000 m²



VIE #005



COOPHIMMELBLAU

APARTMENT TOWERS „WIENERBERG CITY“ | 1999–2004
Herta-Firnberg-Straße 16, VIE 1100

Program:
3 residential towers connected with a sky bridge

Floor area: 27 900 m²



VIE #006



COOPHIMMELBLAU

APARTMENT AND OFFICE BUILDING | 2001/2003–2005

Schlachthausgasse 28-30, VIE 1030

Program:
82 living units and 12 000 m² office space

Floor area: 21 600 m²

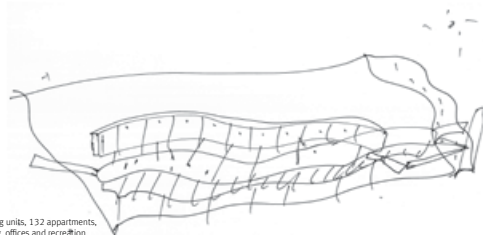


VIE #007



COOPHIMMELB(L)AU

APARTMENT BUILDING „LIESING BREWERY“ | 2002/2006–2011
Breitenfurterstraße 372-374, VIE 1230



Program:
163 living units, 132 apartments,
shopping, offices and recreation

Floor area: 105 270 m²

VIE #008



COOPHIMMELB(L)AU

MARTIN LUTHER CHURCH | 2008–2011

Alte Poststraße 28, Hainburg 2410

Program:
Sanctuary for 50 people, community space and ancillary rooms

Floor area: 290 m²
Height bell tower: 20 m



VIE #009

COOPHIMMELB(L)AU



© Erwin Wurm

COOP HIMMELB(L)AU was founded by Wolf D. Prix, Helmut Swiczinsky and Michael Holzer in Vienna, Austria in 1968, and is active in architecture, urban planning, design, and art. In 1988, a second studio was opened in Los Angeles, USA. Further project offices are located in Frankfurt/Germany, Paris/France and Hongkong/China.

COOP HIMMELB(L)AU's most well-known projects include: the Rooftop Remodeling Falkestraße in Vienna (1988); the “master plan” for the City of Melun-Sénart in France; the Groninger Museum, East Pavilion in Groningen (1994) in the Netherlands; the multifunctional UFA Cinema Center in Dresden, Germany (1998); the Academy of Fine Arts (2005), the BMW Welt (2007) and Pavilion 21 MINI Opera Space in Munich; the Akron Art Museum in Ohio, USA (2007) and the Central Los Angeles Area High School #9 of Visual and Performing Arts in Los Angeles, CA, USA (2008), Apartment Building ‘Liesing Brewery’ in Vienna (2011), Martin Luther

Church in Hainburg, Austria (2011) and the Busan Cinema Center in Busan, South Korea (2011).

Among the current projects are the Musée des Confluences in Lyon, France; the House of Music in Aalborg, Denmark; the European Central Bank's new headquarters in Frankfurt am Main, Germany; the Dalian International Conference Center in Dalian, China; the Museum of Contemporary Art & Planning Exhibition in Shenzhen, China; the Central Bank of Azerbaijan, Baku as well as the New Open Parliament of Albania.

Spengergasse 37
1050 Vienna
Austria

T: +43-4-546 60
F: +43-1-546 60-600

office@coop-himmelblau.at

www.coop-himmelblau.at

